



# DETROIT

DISTRICT AIR QUALITY AT A GLANCE



District **6**  
Population **106,000**  
Mayor **Mike Duggan**

Council Member **Raquel Castañeda-López**  
District Manager **Eva Torres**  
Deputy Manager **Antonio Mora Mills**

## HOW TO IMPROVE AIR QUALITY

Community Action to Promote Healthy Environments (CAPHE) Public Health Action Plan\* contains 25 recommendations to improve air quality and health in the City of Detroit. Below are several strategies which could improve air quality in District 6.

### Vegetative Buffers

Planting trees along key routes, like I-94, I-75, I-96, and M-10, could lower residents exposure to roadway air pollutants.

### Renewable Energy

Encouraging the use of renewable energy, like solar panels and small wind turbines, would reduce reliance on coal-fired power plants and improve air quality.

### Filters

Installing filters in childcare centers and in schools would help lower children's exposure to indoor air pollutants.

### Monitoring

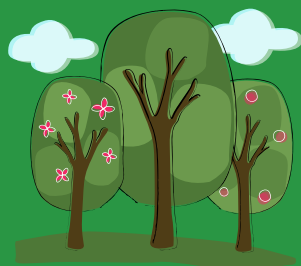
Monitoring air quality around roadways and point sources could help identify "hot spots" that could be targeted to reduce emissions.

### Health Impact Assessments

Requiring Health Impact Assessments for development projects in the City could identify important opportunities to protect residents health.

## DISTRICT STATISTICS

District 6 has 2.9% tree cover, which is lower than American Forests' recommendation of 40% coverage for (eastern) metropolitan areas.



I-94, I-75, I-96, and M-10 are major roadways that all contribute to air pollution in District 6.



District 6 has the largest Hispanic population and a larger percentage of children than any other district.



District 6

District 6 has the highest cancer mortality risk in the City of Detroit at 48.6 per million.

\*[caphedetroit.sph.umich.edu](http://caphedetroit.sph.umich.edu)



# COMMUNITY ACTION TO PROMOTE HEALTHY ENVIRONMENTS PARTNERS



## PROJECT DESCRIPTION

CAPHE is a partnership working to reduce air pollution and improve health in Detroit. CAPHE's Public Health Action Plan leverages over 20 years of community-academic research and action between academic, community, and governmental organizations to identify and create solutions to Detroit's air quality challenges. This community-based participatory research initiative ensures that Detroit residents have a substantial voice and opportunity to impact the environment and public health.



**Contact: Alison E. Walding, Program Manager**  
[walison@umich.edu](mailto:walison@umich.edu), 734.264.2955, [caphedetroit.sph.umich.edu](http://caphedetroit.sph.umich.edu)